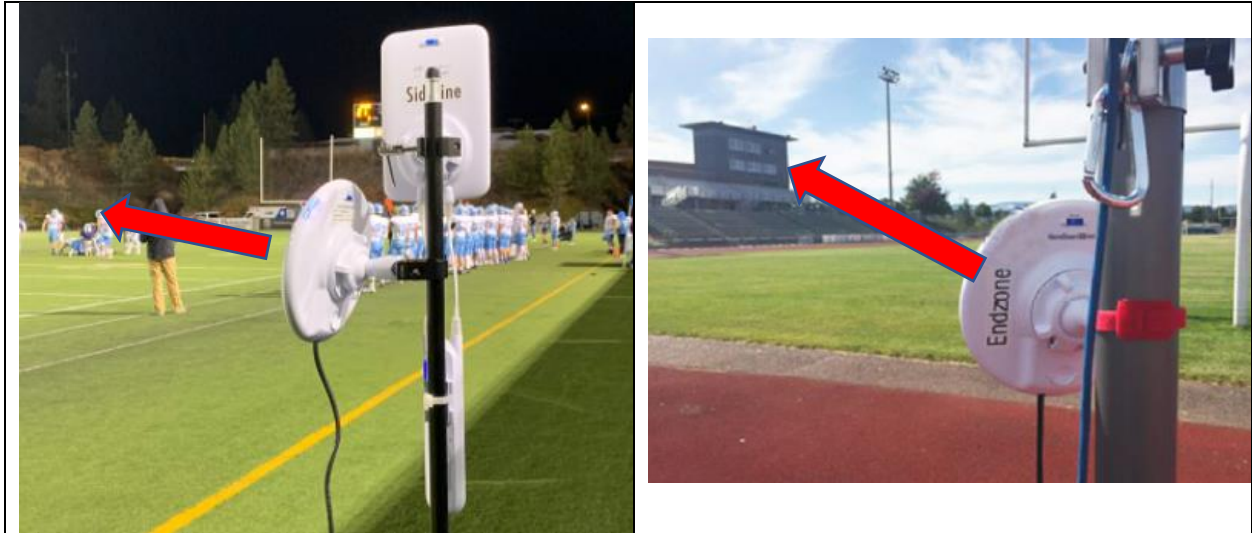


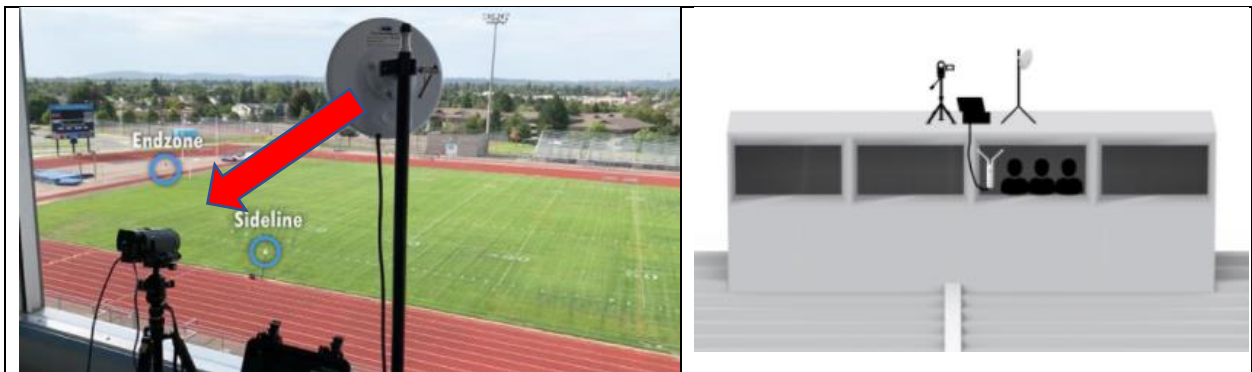
## Sport Scope Smart Camera Set Up Check List

- This check list is intended for ensuring a proper setup after the system has been assembled. Refer to the general instruction manual for basic setup. Then use this check list to ensure all the smaller details are correct so that we have a strong connection and normal speed of downloads during the game:

Check to make sure Endzone and Sideline Bridge antennas are **pointed up directly** at Press box Bridge and are free from obstructions such as **chain link fences, walls, etc.**

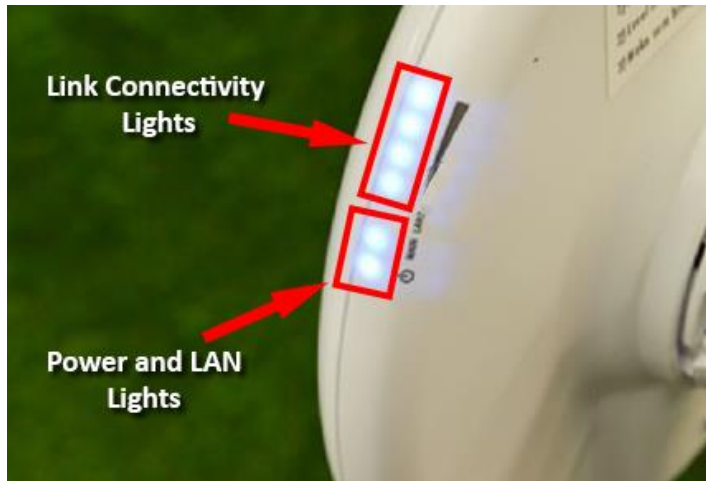


Check to make sure Press box Bridge is **pointing down in between** the Endzone and Sideline Bridges and is free from obstructions such as **chain link fences, walls, windows, glass etc.** Often, it is best to have the Press box Bridge antenna on top of the press box.



It is extremely important that **the 3 Bridge antennas can all see each other and are as free from obstructions as possible – even glass – and that their angles are correct.** If you need to adjust the angle, it is a best practice to unplug the Bridge antenna and plug it back in after adjusting the angle.

- Check to make sure **all Bridge antennas** have 6 lights total. Power light, blinking Main light, and 4 Link Connectivity Lights



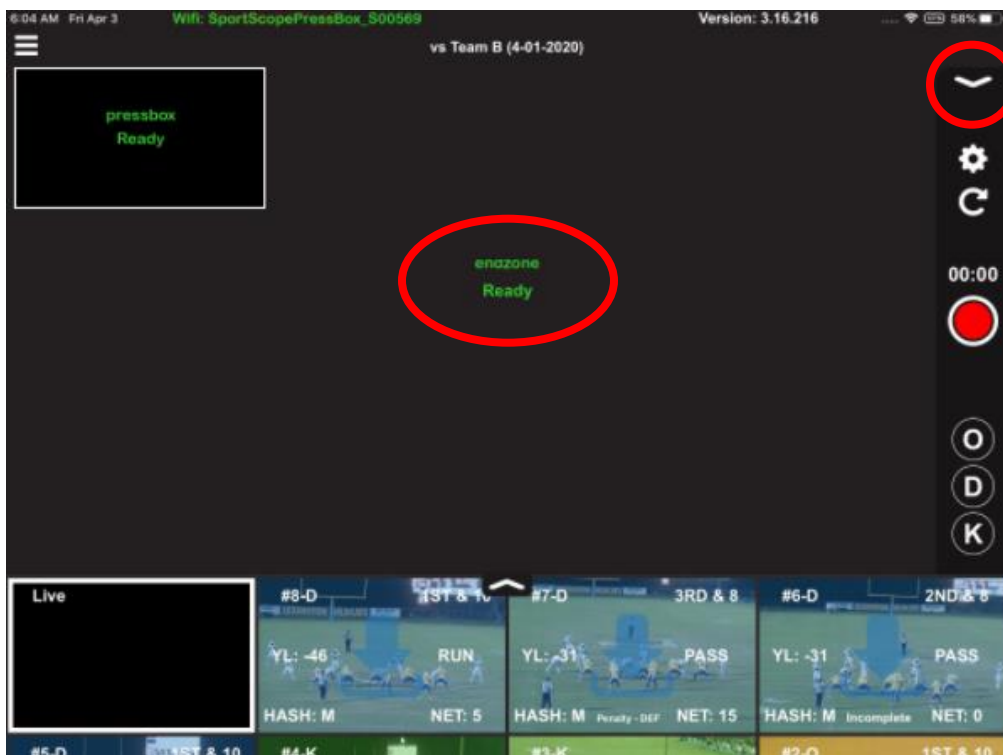
- Make sure all iPads in the Press box area are in the same room as the Press box iPad Antenna. **ALL THE IPADS IN PRESSBOX AREA OR ROOM MUST BE NEAR THIS ANTENNA AND CANNOT BE SEPARATED BY OBSTRUCTIONS** such as walls, ceilings, floors, windows, etc.



- Make sure **Controlling iPad** is connected to the Press box iPad antenna and is near it. Remember that the **Press box iPad antenna should be inside press box or in same room as the Press box iPads – NOT on outside of window or on a chain link fence.**



- First only connect the controlling iPad to the Sport Scope Pressbox network and start a new game. Make sure the endzone angle is in the middle of screen and control panel on right side is pulled up so you can see the record button. The livestream of the endzone angle should appear immediately after.



With **only the one Controlling iPad connected to the Press box network**, verify that all the controls are working: zoom, pan, tilt, and record. Record a few test clips and ensure that the downloads are coming in fast.

Make sure there is no lag when moving endzone camera or heavily distorted video with image smearing. Some occasional slight distortion or minor delay is ok as long as it doesn't prevent your ability to follow a play.

Make sure Sideline Antennas are at **about the 20-25 YL closest to your Endzone Camera**. Ensure Booster antenna is connected and facing down your Sideline where the coaches will be with their iPads.

The higher on the tripod the Booster antenna is the better so that its signal is blasted out above the bodies of any players that might walk in front of it. **BUT MAKE SURE THE PANEL IS NOT POINTED UP INTO THE SKY.** The iPads on the Sideline talk with this antenna so they need to be in range of the signal it is blasting out. The closer the iPad is to it the better but the signal usually reaches to the far 25 YL.



Next **connect only one "Replay" iPad** to the Sideline network and record a few more test clips from the Controlling iPad. Make sure downloads are still coming in fast.

- Make sure all “Replay” iPads are **NOT** looking at the Endzone live stream. They should **only be viewing a past replay clip** or ensuring that the controls panel on the live feed screen is collapsed.



- Verify that any iPads on the **Sideline are connected to the Sideline Network** and any iPads up in the **Press box are connected to the Press box network**. iPads on the wrong network depending on location can cause major issues.

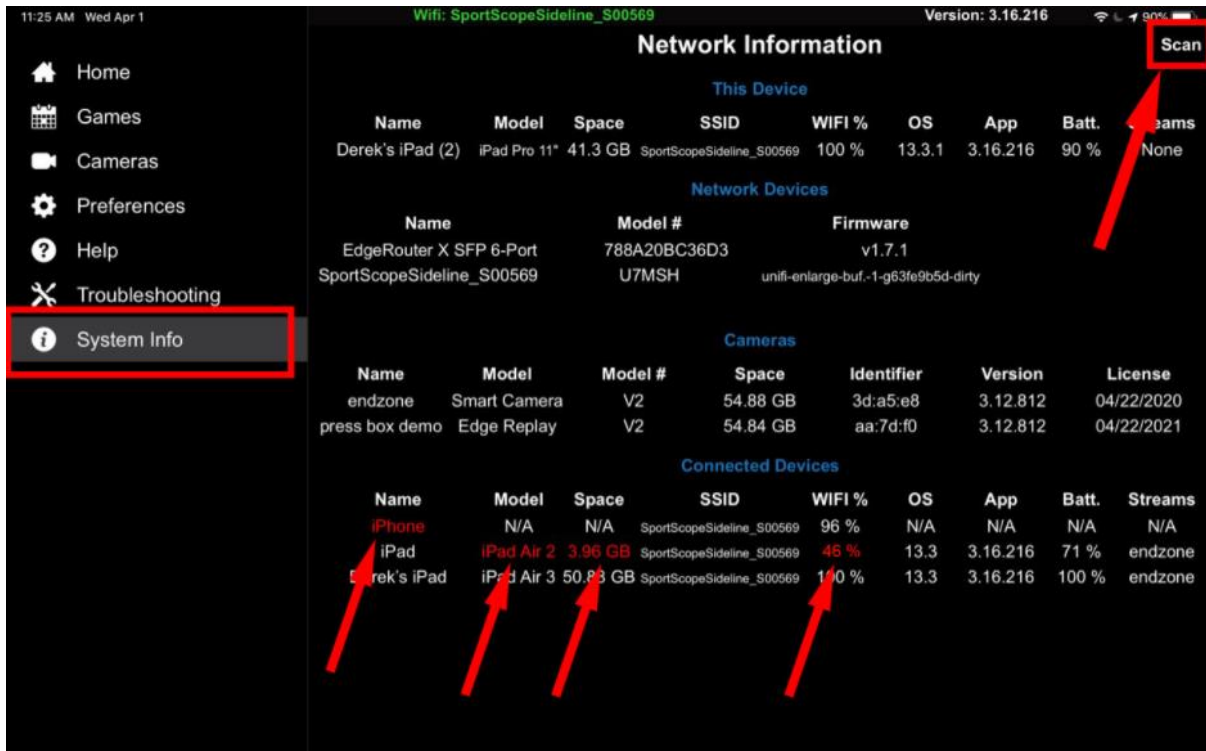
- Once you’ve confirmed system is working normally with 2 iPads on network, you may add more iPads one at a time and then monitor that the downloads are coming into each iPad at a normal speed. **Less iPads on the Sideline network is ideal.**

If after an iPad is added to the network the downloads begin coming in slowly and/or the Controlling iPad starts to experience lag then **temporarily turn the WiFi off for all iPads except the Controlling iPad** and allow it to catch up. Then repeat re-connecting iPads to the network **one-by-one** ensuring that they are close to the relevant antenna when connecting and that speeds are normal before connecting the next one.

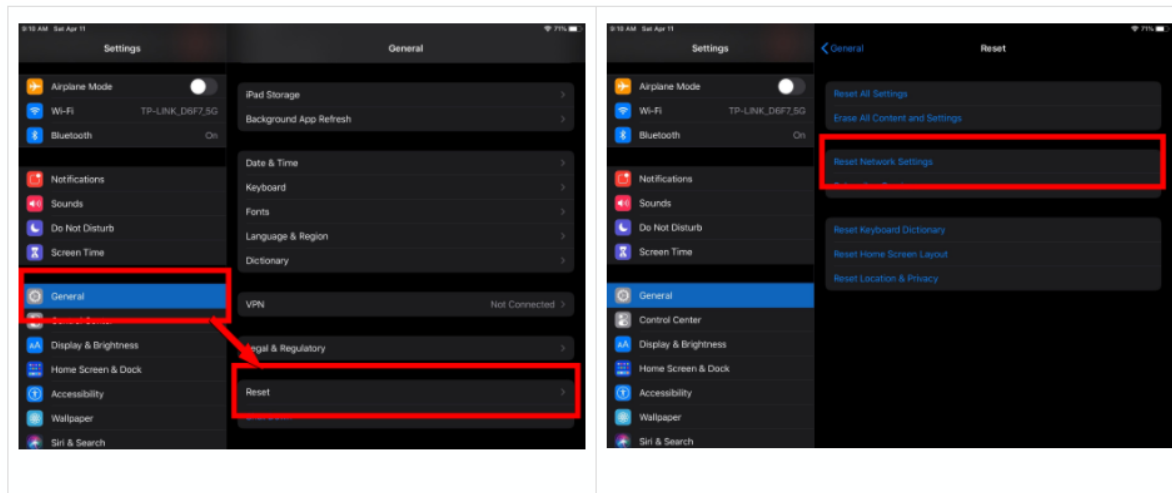
- Before the game begins be sure to turn the Auto-Lock feature of **all iPads to NEVER** so that none of the iPads fall asleep. This can be found from the **Display and Brightness** setting in the iPad.

□ Make sure that the iPads never wander out of range from their relevant iPad antenna. If you need to move an iPad out of range, for example take it to the locker room during half time, **turn the WiFi OFF first**. Then when you bring it back within range of the antenna you can turn WiFi back on and connect to the appropriate network.

- If you are still experiencing problems where the Controlling iPad is lagging and/or replay downloads are slow you can do a **System Info page Scan** and see if any connected devices are not compatible with the system, have low storage data, and/or have poor WiFi %. It's best to have a **WiFi % of 80 or above**.

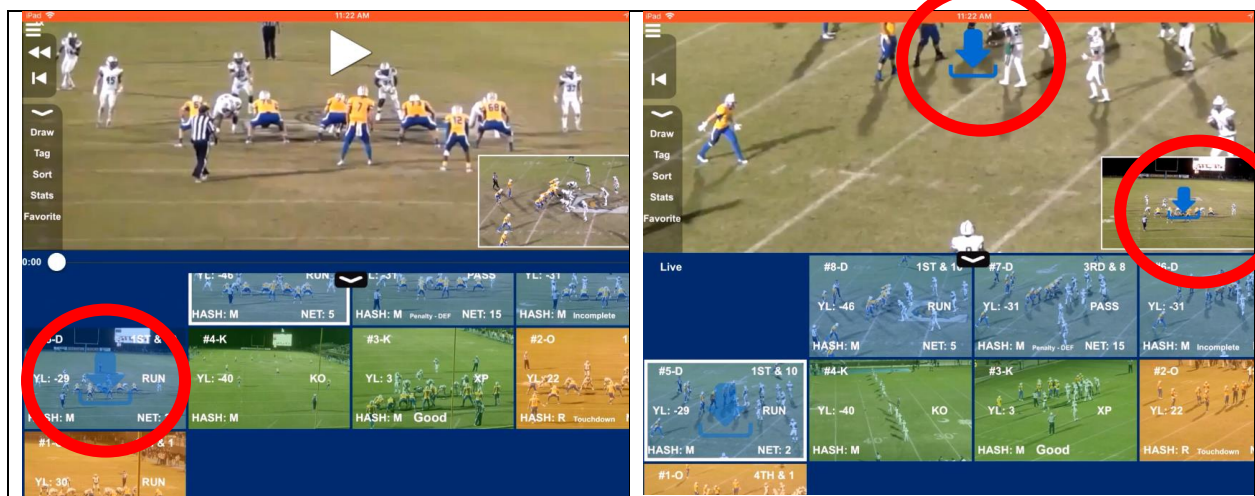


- If you think one particular iPad is the culprit for network issues you can reset the network settings on that iPad. Go to **General > Reset > Reset Network Settings**. The iPad will reboot. You will be required to input the WiFi password once you reconnect.



After the game is over and **before you tear down the system**, you may notice that not all plays have downloaded to every iPad. There will be a Blue download arrow on the clip.

On the **iPad that you plan on uploading with** later, be sure to **scroll through all the clips for BOTH ANGLES** and tap the **blue download arrow** for all plays so that all are downloaded. There should be NO blue download arrows remaining for either angle.



This way you will have all clips downloaded to the iPad so they will all be shared when you export the game for upload to Hudl, Qwikcut, etc.

If a blue arrow does not download, **force close the app** by double tapping the home button and swiping the Sport Scope app up and away. Then relaunch the Sport Scope app and try downloading those plays again.